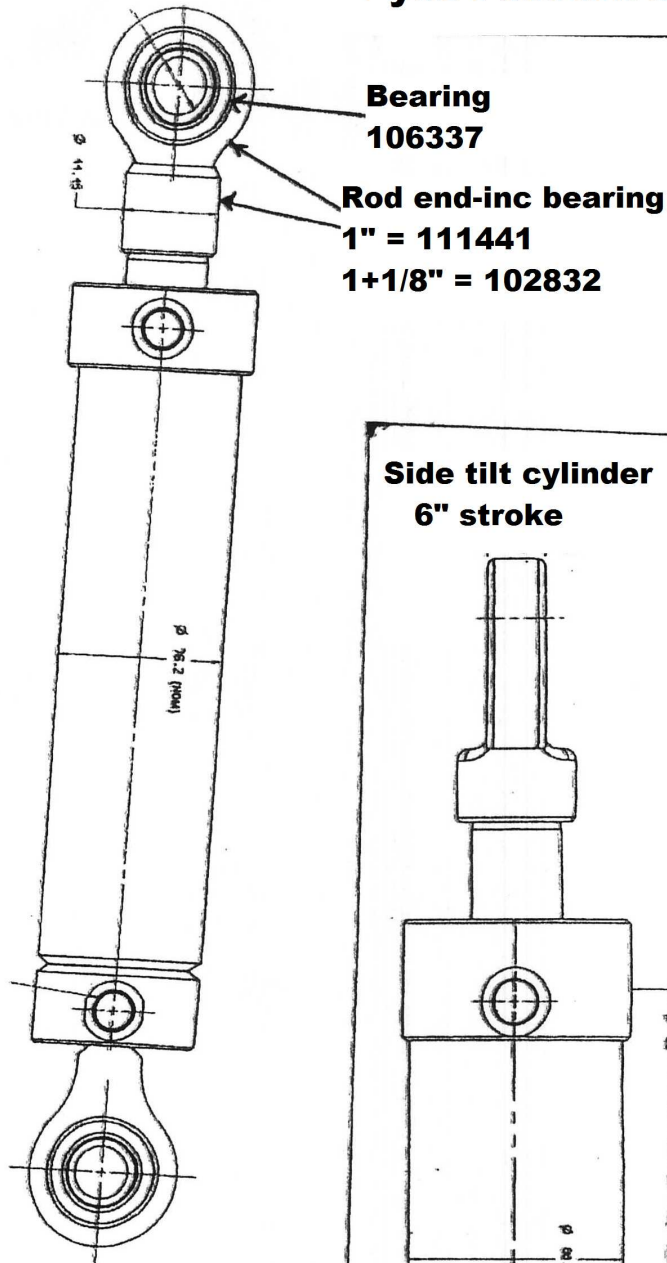


Hydraulic cylinders- Lyco Post driver



Bolt 1/2"
100336

washer
100273

Buffer
100308

Dome washer
100276

pre S/No;
3711
(short)

Lift rod-
2 lengths
100277 *

Gland
(no seals)
100278

post S/No:
3711 (long)

Cylinder Barrel
pre S/no: 3711
106305
post S/No: 3711
100177

Bolt 3/8"
100333

Damper spring
106500

(suit 3/8 bolt)
Power house-
100298 (5/8)

Hammer- Lift cylinder complete
100178

*NOTE: For seals see
"seal kit" page